

# SoCtronics Corporate Overview

## Industry's 1<sup>st</sup> Design Foundry™



**Hyderabad  
India**



**Santa Clara  
California**



# Company Profile

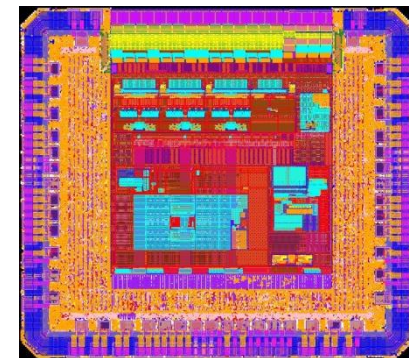
- **One-stop design service group of companies operating since 2003**
- **Offices in Hyderabad, India and Santa Clara, California**
- **500+ employees world-wide**
- **Services**
  - **Logic and circuit design**
  - **Functional verification**
  - **Embedded development**
  - **Physical design**
- **Engagement models**
  - **Turnkey: spec to SOW to deliverables**
  - **Off-shore Design Center in India**
    - **Operated by SoCtronics**
    - **Directed by customer**
- **<http://www.soctrionics.com/>**

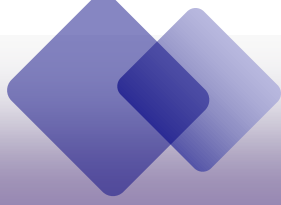
## 2011 Press release

### SoCtronics Announces the First 28nm Design Tapeout From India by the World's Premier Design Service Company

Rate | Review | More IC News | Share | Tweet | in Share

**SANTA CLARA, CA -- (MARKET WIRE) -- Oct 18, 2011 --** SoCtronics, a leading semiconductor and embedded software engineering services company located in Santa Clara, CA and Hyderabad, India, today announced that it has successfully completed India's first 28nm design by a design service provider. The design project was contracted by a leading fabless semiconductor company from Silicon Valley. It is targeted for 28nm HPL process at the world's leading semiconductor foundry. Customers of SoCtronics can now benefit from the know-how and experience accumulated from this combination of trail-blazer technology and project.





# Customer Testimonials

“SoCtronics has helped us solve difficult technical challenges and address urgent project needs.”

**Mkt Cap \$400M Rev \$275M**

**VP Engineering, Publicly listed fabless semiconductor company**

“SoCtronics has provided high quality engineering teams at steep ramp-up cycles to meet our project needs.”

**Mkt Cap \$2.48B Rev \$4.86B**

**Executive VP Engineering, Publicly listed fabless CPU IC company**

“We have had our share of urgent projects and difficult challenges. SoCtronics showed time and again that they have the customer's priorities in mind and helped us meet those challenges.”

**Mkt Cap \$80M Rev \$94M**

**VLSI Engineering Director, Publicly listed fabless company**

“SoCtronics is a quality conscious, technically competent and schedule sensitive engineering services provider. Our project was for spec to silicon. SoCtronics met and exceeded our expectations in every step of the project.”

**Mkt Cap \$1.43B Rev \$1.16B**

**VP & GM, Publicly listed fabless company**

“We have used SoCtronics resources primarily as verification and application support teams. We are quite satisfied with their responsiveness and high work quality.”

**Mkt Cap \$5.61B Rev \$1.91B**

**VP & GM, Publicly listed fabless EDA/IP company**

**SoCtronics can arrange for the above testimonial contributors to be our trade references**

# Services Offered

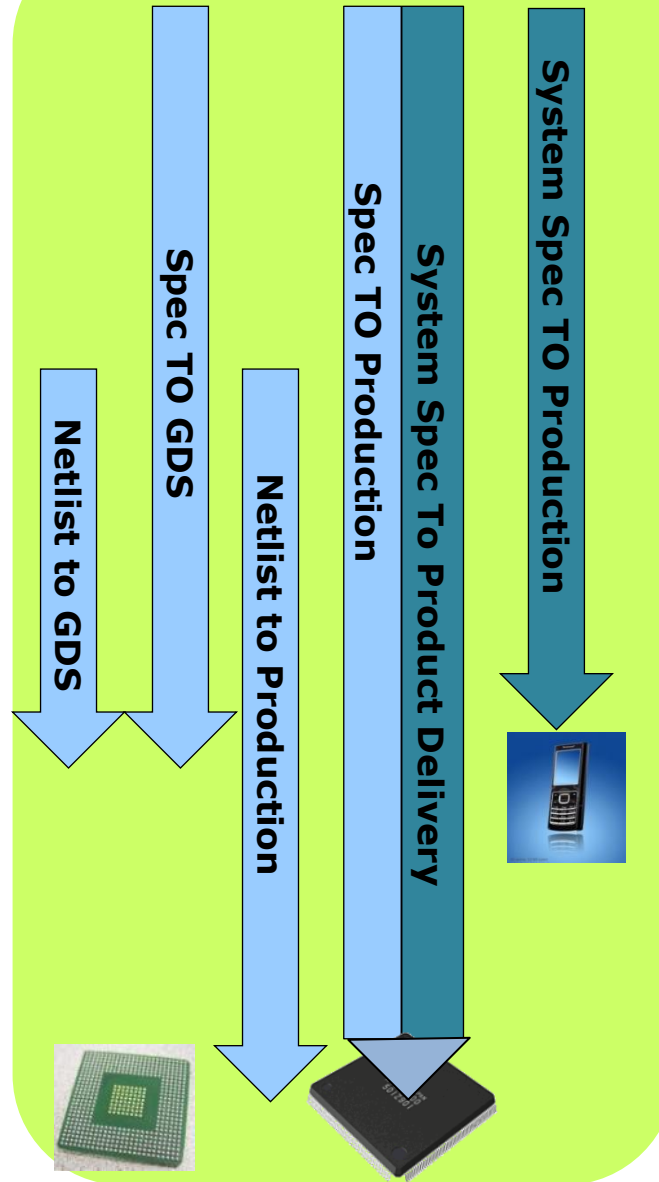
## Chip/SoC Design

- Architecture Specification
- RTL Development & Synthesis
- Pre-layout Verification
- Design Implementation

- Physical Implementation
- Analog mixed signal design
- Post Layout Verification
- Physical Verification
- Tapeout / Foundry Interface

- Mask Tooling
- Assembly Management
- Test Dev. /Management
- Product Qualification
- Production Logistics

## Service Offerings



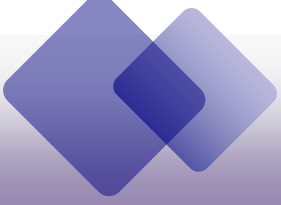
## System Design

- Multimedia Codec Dev.
- Drivers, Firmware, API
- Android Applications
- Hardware Diagnostics
- System QA & Testing

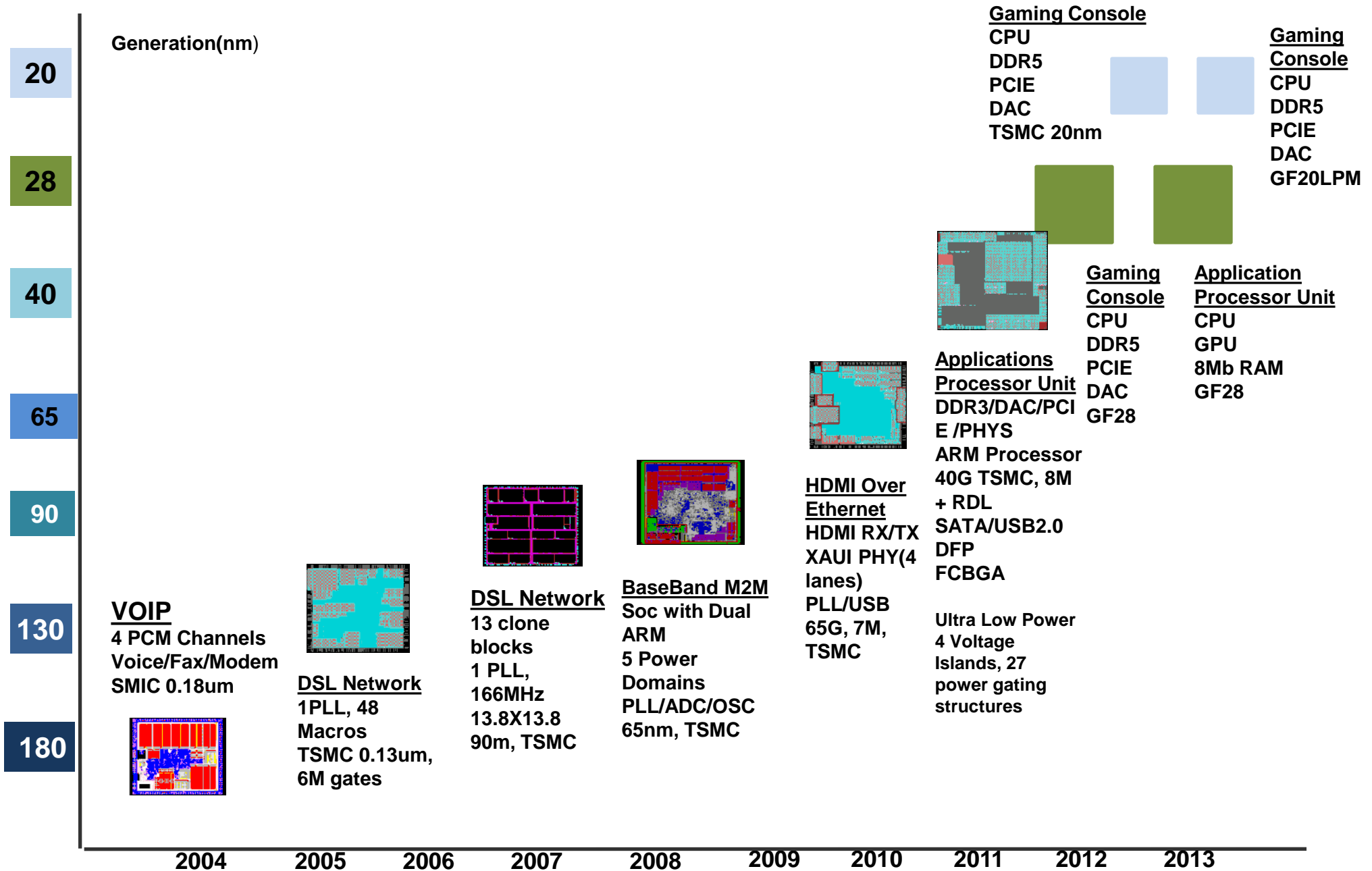
### Independent Testing Solutions (ITS)

- Consulting Test Solutions
- Specialized Test Services
- Customized Test Services

SoCtronics provides value added services to electronics & semiconductor industries



# VLSI Project Highlights



# SoCtronics Differentiation

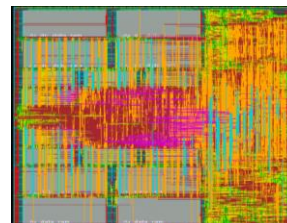
## Investment in Infrastructure and Know-how

### SOC-High Performance (HP) flow

SoCtronics provides physical design expertise to implement high performance designs.

Helps customers realize the highest possible performance by utilizing a streamlined mix of technology and device mapping, optimal design margin development, performance optimization utilities/scripts and custom design work.

Hardened core IP  
20% higher performance

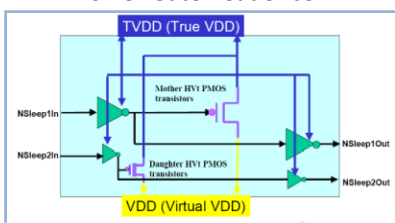


Significant investments in know-how, EDA tools, facilities and computing/storage servers

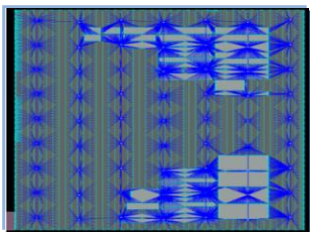
### SOC-Low Power (LP) flow

'SOC-LP' is leveraging SoCtronics highly acclaimed SmartPower™ flow to help implement industry leading low power features with the best power metrics.

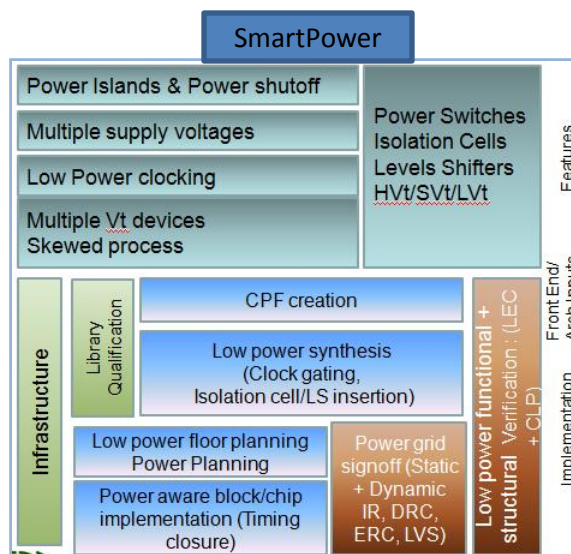
Power Gate header cell



Std Cell/Macro switch enable buffering



### Example Complex SOC with DVFS, Multi-Vcc, Power and Voltage Islands implemented

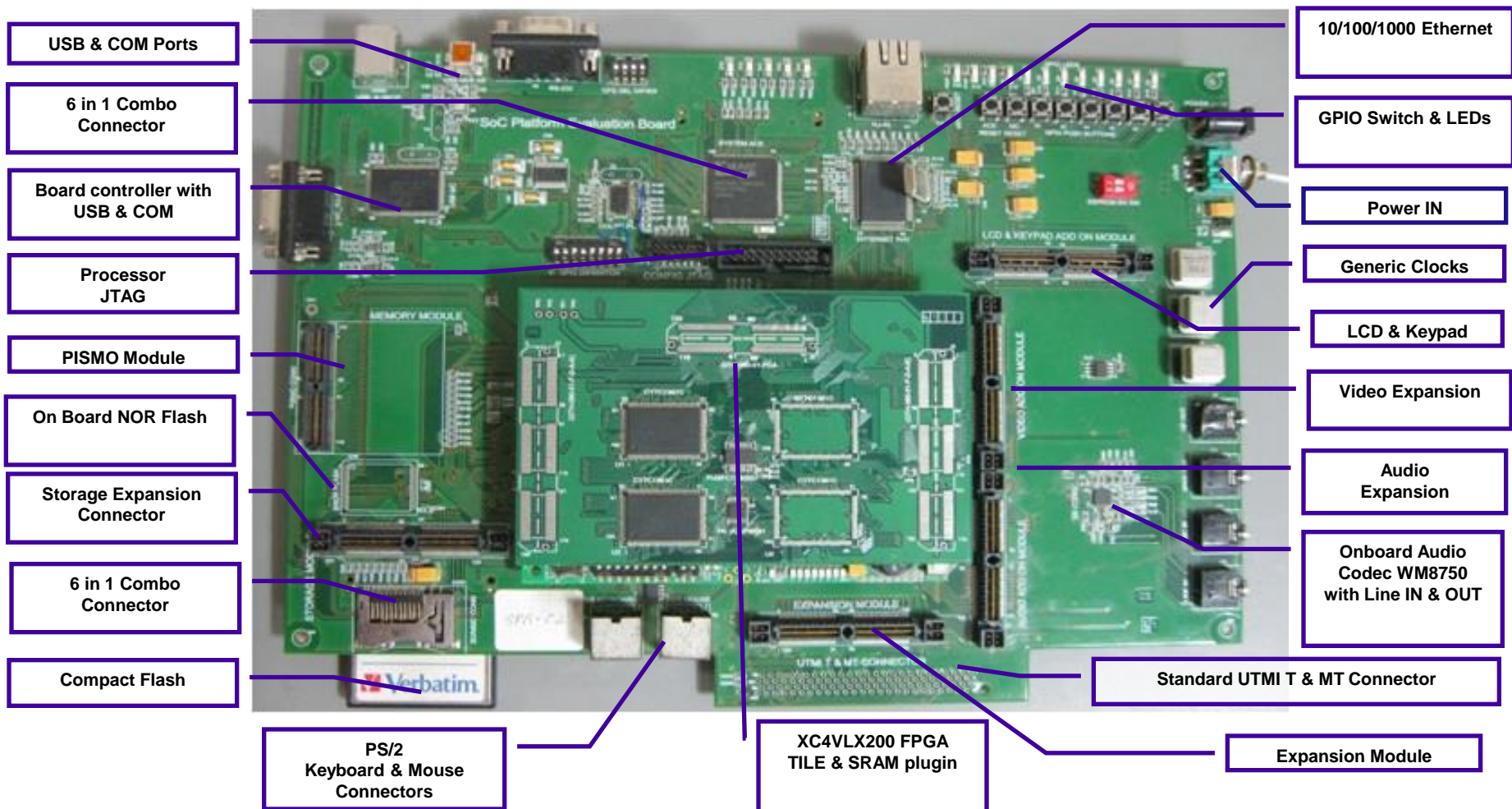


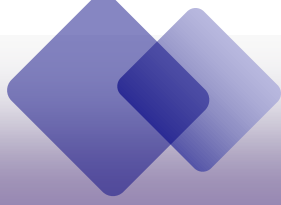
Knowledge base engineering process and signoff based procedure proven over many complex projects with tier-1 customers

Experience based proprietary design flows for complex high performance and low power designs

# FPGA Platform for SOC Implementation

- Customer Benefits
  - Hardware / Software co-development
  - System level validation prior to tapeout
  - Applications development acceleration
  - Proven platform – plug-and-play





# SOC Value-Added Services

- Reference Platform Development
  - System Level Design
    - Experience on ARM11, Cortex-A8, TI 64X+, Tensilica HiFi2, ARC AS210, ARC 725D
    - Single core and multi-core frameworks
  - Multimedia Codec Development
    - Standard codecs: video, audio, speech
    - Custom codecs development and optimization
  - Peripheral drivers, firmware, API development
  - Multi-OS development and support
- System Hardware
  - Hardware/Software validation and diagnostics
  - Regression test development and implementation
- Complete System Software (Windows/Linux/RTOS) for Mobile/Computing platforms
- Android Applications
- Software Testing & QA





# Client Directed Off-shore Design Center Model

- Client deploys ODC team at agreed level
- Content of ODC team dynamically adjusted
- Provision available to increase deployment level
- EDA licenses and facilities included
- Design flow and expert level knowledge support from SoCtronics senior staff
- Project level direction and management completely under client exclusive control
- SoCtronics provides HR and administrative support
- Intellectual properties developed belong to client company
- BOT (Build-Operate-Transfer) option allows client to acquire ODC team at future time

